



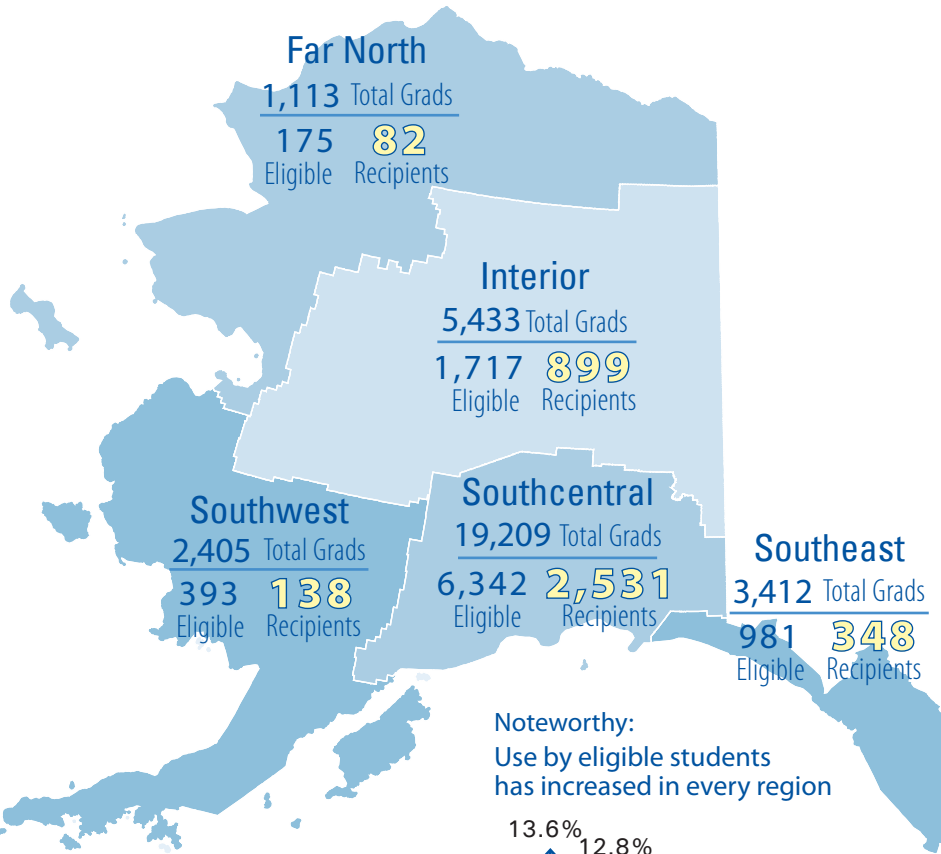
APS Statistics

at a glance

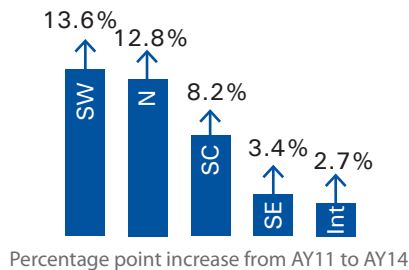
2015

The power of the APS - positive outcomes for postsecondary education

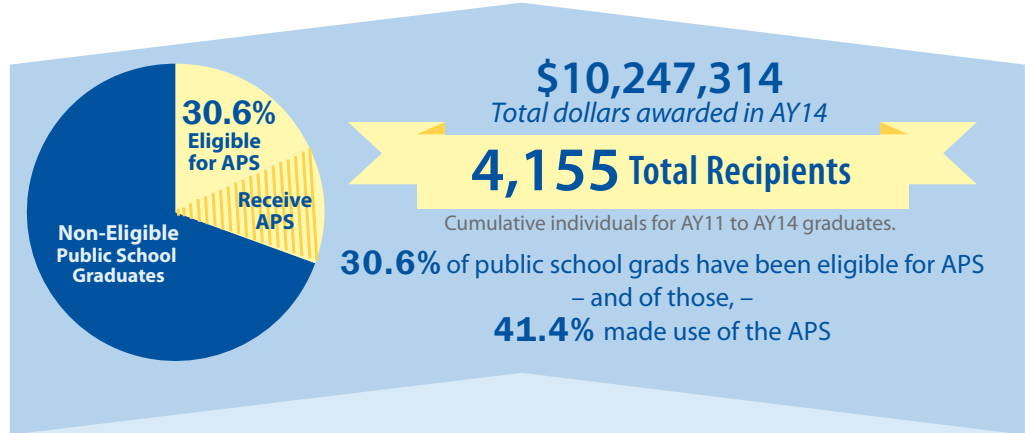
Now in its fourth year, the Alaska Performance Scholarship is an invitation to excellence for Alaska students and schools. The merit-based scholarship provides an opportunity for eligible students to annually receive between \$2,378 and \$4,755 toward postsecondary studies at qualifying Alaska institutions. Over 9,600 high school graduates from the classes of AY11 through AY14 have met the requirements to become APS eligible, and 4,155 have gone on to make use of the scholarship.



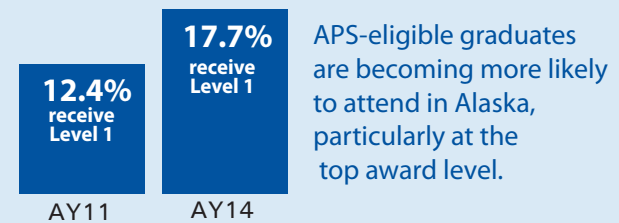
Noteworthy:
Use by eligible students has increased in every region



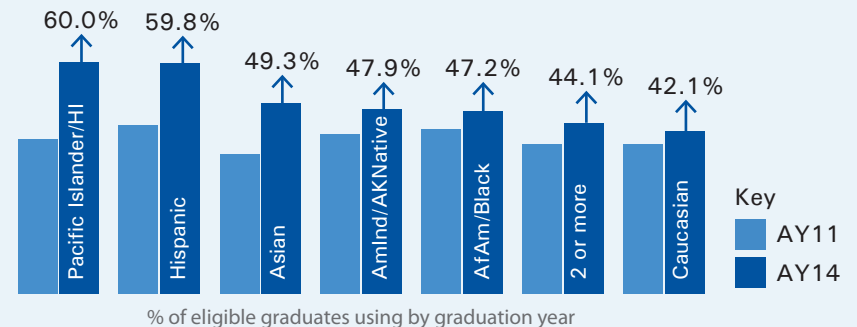
Noteworthy:
50/54 50 school districts have had APS-eligible graduates since the scholarship's inception



Who is staying in Alaska to use the APS?



Use has increased across all ethnic groups.





APS recipients are:

Less likely to need remedial classes

More likely to:

enroll full-time

attempt more credit hours

stay enrolled and persist

All behaviors shown to: **INCREASE**
chances of **GRADUATION**

Level 1 - up to \$4,755 per year

High School GPA 3.5
ACT 25 or SAT 1680
Specified high school curriculum

38.0%
receive
Level 1

Level 2 - up to \$3,566 per year

High School GPA 3.0
ACT 23 or SAT 1560
Specified high school curriculum

32.6%
receive
Level 2

Level 3 - up to \$2,378 per year

High School GPA 2.5
ACT 21 or SAT 1450
Specified high school curriculum

29.4%
receive
Level 3

"APS recipients are, by definition, better prepared for postsecondary education than students who are not eligible for the scholarship."

-2015 APS Outcomes Report

Career and Technical Education awards can be earned with both the Workkeys and ACT/SAT scores.

How are they doing?

UA Students Taking Remedial Courses

Require Remedial Classes
Receiving APS

Require Remedial Classes
Not-Receiving APS

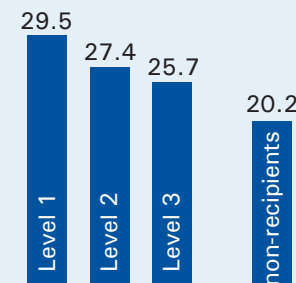
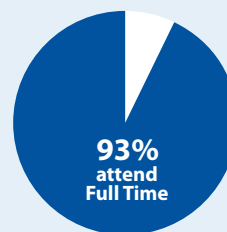


— vs —



1 in 6 APS first-time freshmen took remedial courses in fall 2014, compared to 1 in 2 of the non-recipients.

UA Students' Course Load in Credits



AY14 First-time Freshmen

APS recipients enroll in more credit hours on average than non-recipients.

Enrolled in Fall 2011 (first students to receive the APS)

APS Eligible

75% ARE STILL ENROLLED



— vs —

Not APS Eligible

40% ARE STILL ENROLLED

